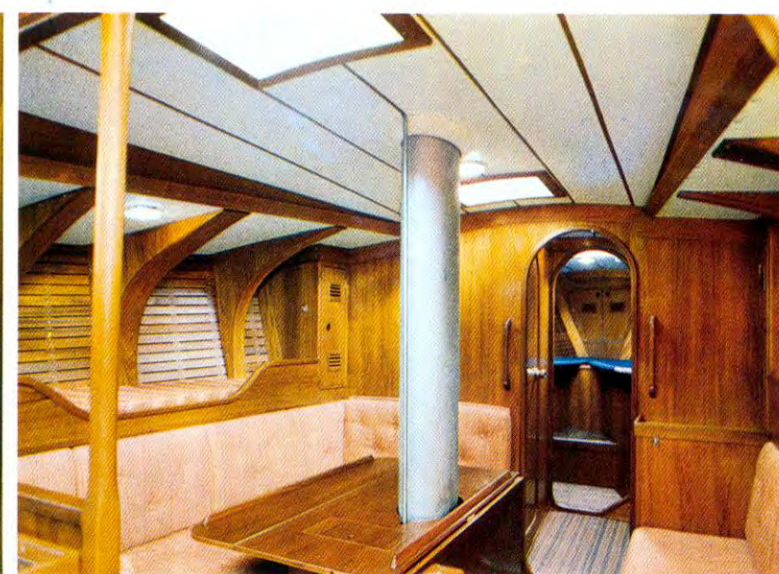
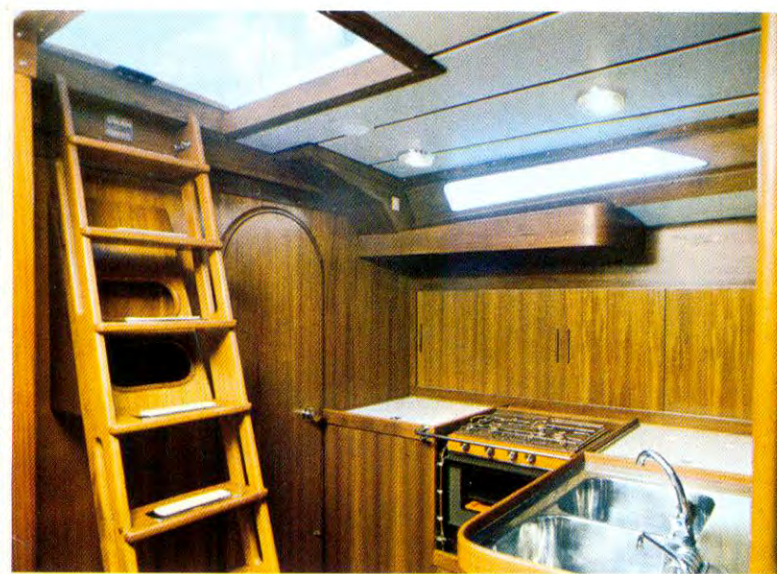
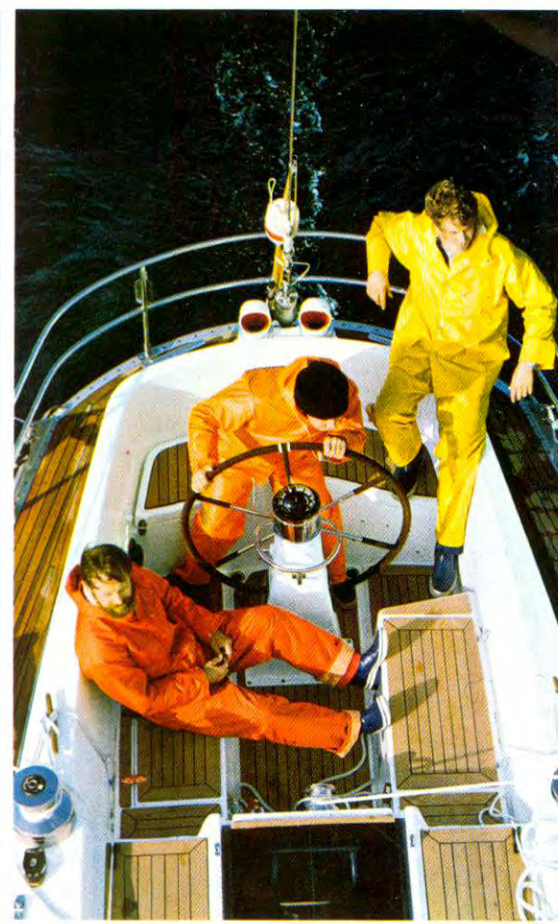


**NAUTOR's**  
**SWAN 47**  
Design: Sparkman & Stephens





#### Why Swan 47?

If you mean why is the latest Swan 47 feet in overall length, there are several reasons. First, at Nautor we rely heavily on feedback from current Swan owners. Ten per cent of present 550 Swan owners have owned a Nautor yacht before. This obviously says much for Swan quality, reliability and resale value, but it also means that we pay very special attention to customer requirements. And the demand is for a new medium-sized Admiral's Cup boat at the lower end of class one.

It's not hard to see why. Britain and Germany, the top teams in the 1975 series, both decided that yachts of around 36-foot rating were the most competitive in Admiral's Cup racing - and events proved them right.

#### I know that the Swan 47 embodies the latest design thinking from Sparkman & Stephens - but how long will she remain competitive?

The proof of the enduring competitiveness of Swans was right there in the 1975 Admiral's Cup. Just look at the Swans chosen. Swans represented no less than eight of the nineteen competing countries. Norway's entire team was Swans, two 44's and a 41. A Swan 43 sailed for South Africa for the second time. A Swan 48 was in the Belgian team. Two Swans represented Hong Kong, Ireland, Holland, Switzerland and Spain all chose a Swan in their teams.

And consider their performances: Flamenco, the Spanish Swan 41, was second of the AC boats in the Fastnet. Trailblazer, the Hong Kong Swan 44, was fourth. All through the two weeks' racing the Swans contributed brilliantly to the various team performances, frequently outstripping the one-off racing machines. No other class of semi-custom or production yacht came remotely close to the Swan record.

#### You said there were other reasons for Nautor's building a 47-footer...?

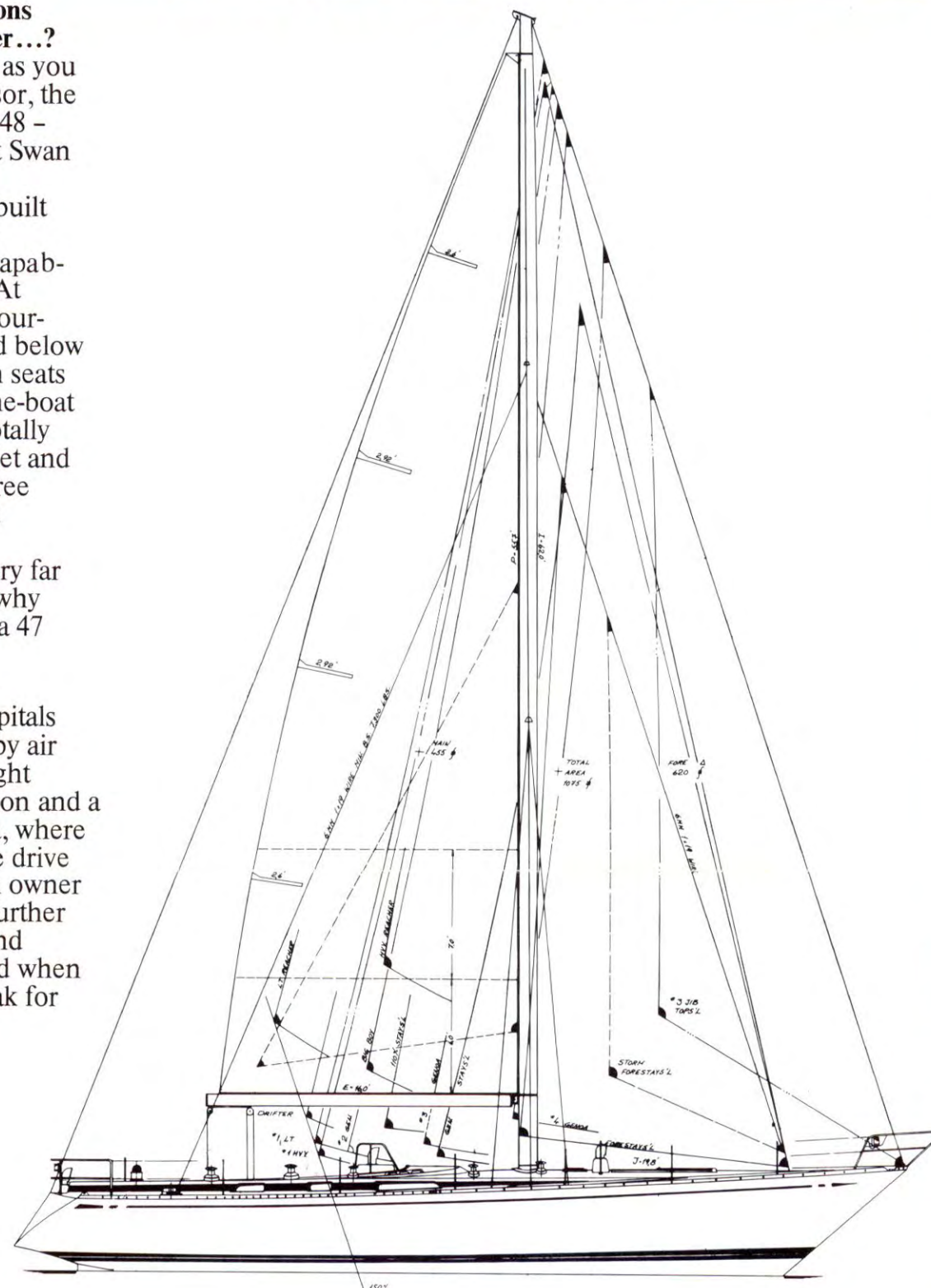
The 47 - she's nearly a 48, as you can see - has a great predecessor, the Bermuda Race-winning Swan 48 - and we believe that the newest Swan will be every bit as successful.

Again, into 47 feet can be built a really fine high performance cruising yacht still within the capability of a foursome to handle. At least for day-cruising and harbour-hopping. The layout above and below decks is matchless. The saloon seats eight yet still allows through-the-boat access. The owner's cabin is totally self contained with its own toilet and shower compartment - and three berths, including a double that swiftly converts to singles.

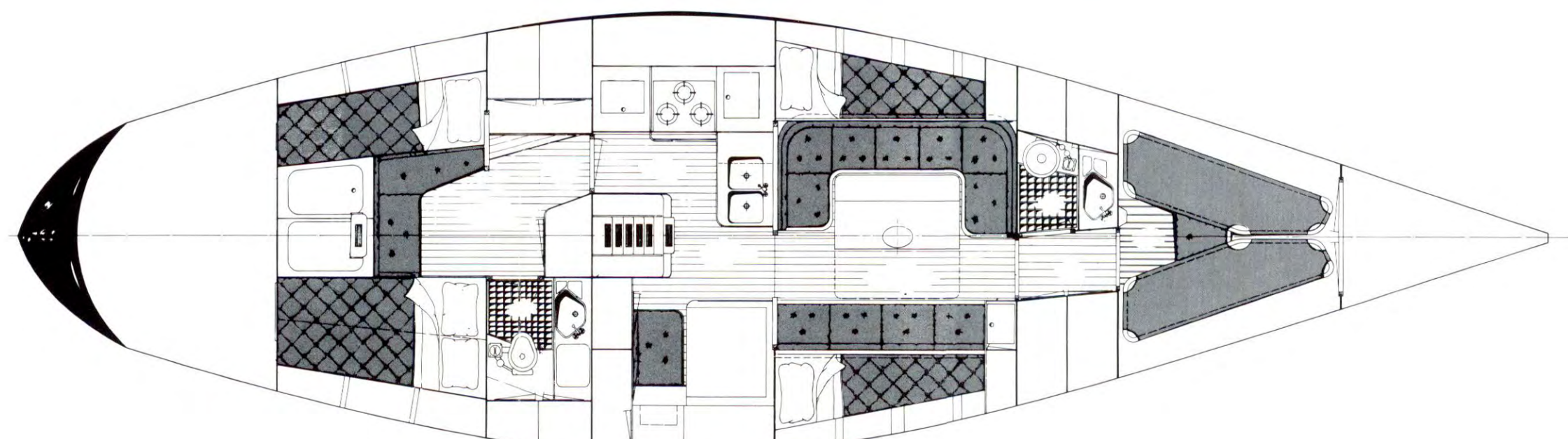
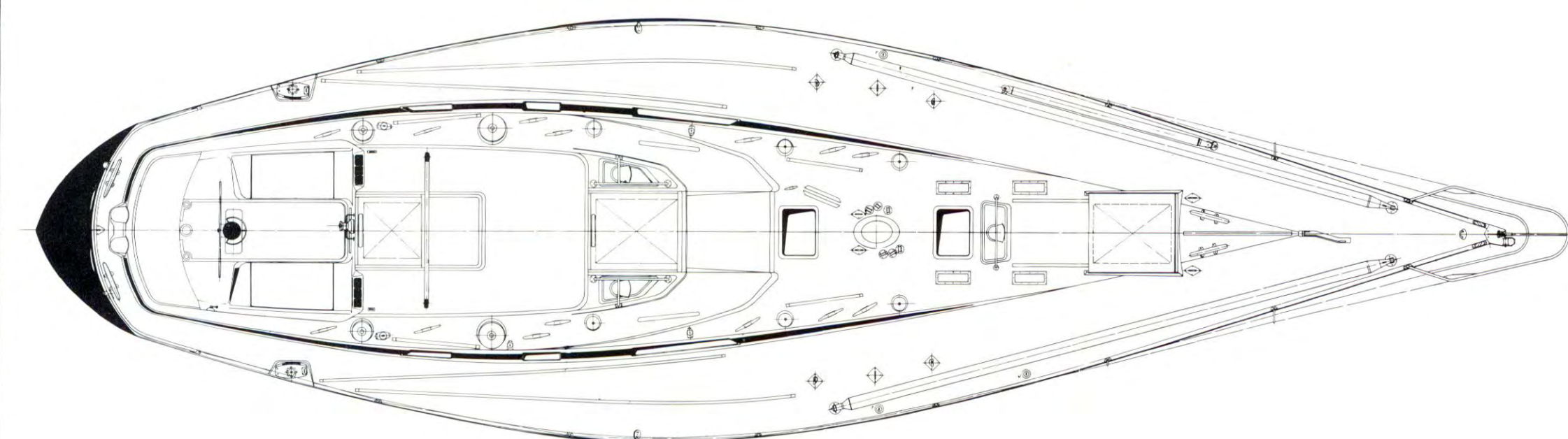
But the pictures tell the story far better than words. Better still, why not come and see for yourself a 47 under construction?

#### Is it easy to reach Pietarsaari?

Simple. Most European capitals are no more than three hours by air from Helsinki. New York is eight hours. Then it's a fast connection and a 35-minute jet flight to Kookola, where you'll be met for the 20-minute drive to the yard. No would-be Swan owner who visits Nautor ever needs further convincing about the quality and distinction of Swan yachts. And when you see the Swan 47 she'll speak for herself.



# The pedigree that guarantees the enduring success of the Swan 47



## Sales Offices

**Builder and Head Office**  
Nautor  
Box 10  
68601 Pietarsaari  
Finland  
Tel. 967-18204  
Telex 7547 nauto sf

**United Kingdom**  
Nautor  
Capstan House  
High Street  
Hamble, Hants SO3 5HA  
England  
Tel. Hamble 3343  
Telex 477316 nautoruk soton

**Denmark**  
Nautor  
Taarbæk Strandvej 120  
DK-2930 Klampenborg  
Denmark  
Tel. 01-630977  
Telex  
I6600 fotex dk yacht design

**France**  
Nautor  
Palais Royal  
5, rue Général Ferré  
06400 Cannes  
France  
Tel. 994 281  
Telex 47965 njyacht canne

**Germany**  
Nautor  
Badstrasse 24  
D-2 Hamburg 13  
Deutschland  
Tel. 040-448636  
Telex 211483 ruder d

**Italy**  
Nautor S.R.L.  
Via Milite Ignoto 12 A  
16038 Santa Margherita  
Ligure  
Italia  
Tel. 0185-80507  
Telex 27128 concorag

**Spain**  
Santa Eulalia S.A.  
Paseo de Gracia  
60 Barcelona - 7  
España  
Tel. 2154216  
Telex 53138 santa e

**Switzerland**

**Middle East**

**USA**  
Nautor Inc.  
P.O. Box 357  
The Strand  
Oxford  
Maryland 21654  
USA  
Tel. 301-226-5188  
Telex 87414 nautor oxmd

## Specifications

Length overall:	47'9"	(14.6 m)
Waterline:	36'2"	(11.0 m)
Beam:	13'8"	(4.2 m)
Draft:	7'8"	(2.4 m)
Ballast:	15,500 lbs	(7,000 kg)
Displacement:	32,400 lbs	(14,700 kg)
Engine:	Volvo Penta MD 21 A diesel	45 kW (61 HP)

