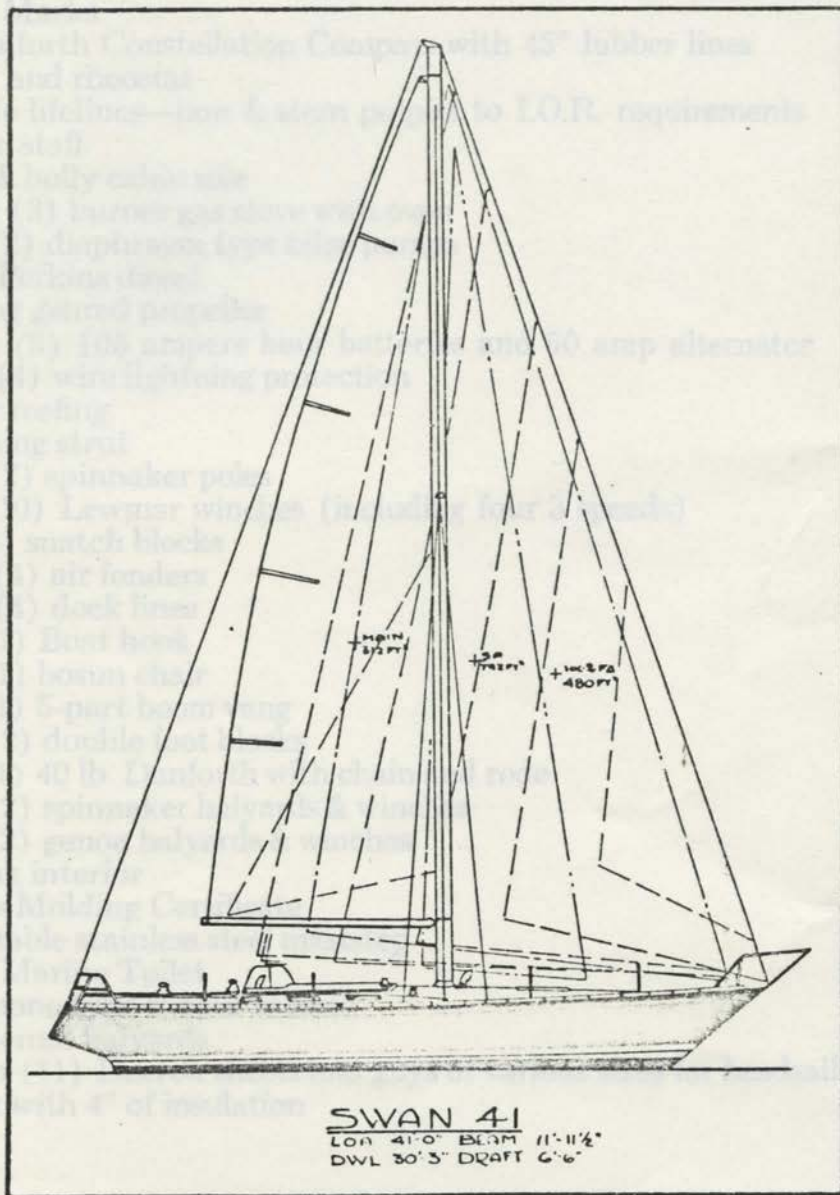


# Nautor's SWAN 41'

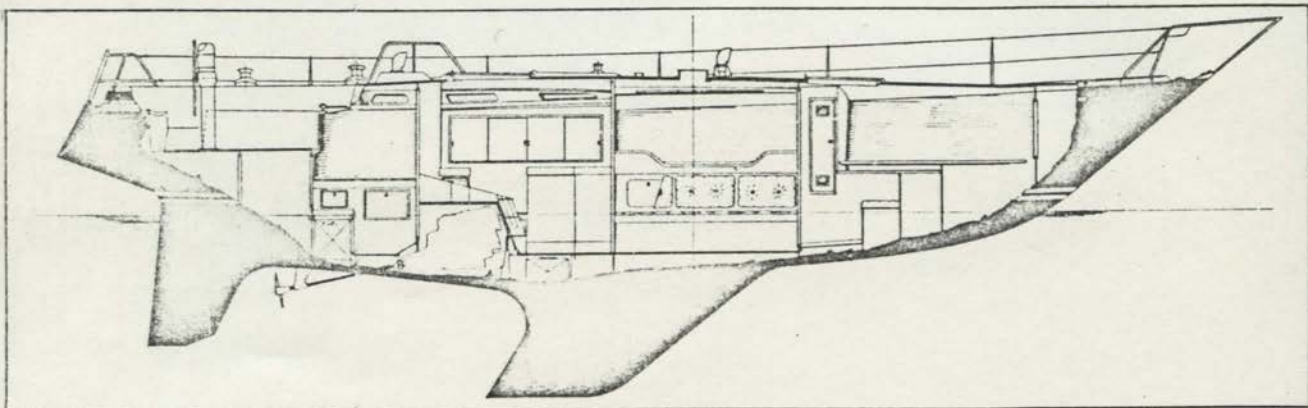


Sparkman & Stephens' Latest  
Contribution to the Fine Art of Yacht Racing

We are proud to include the equipment below as standard items.

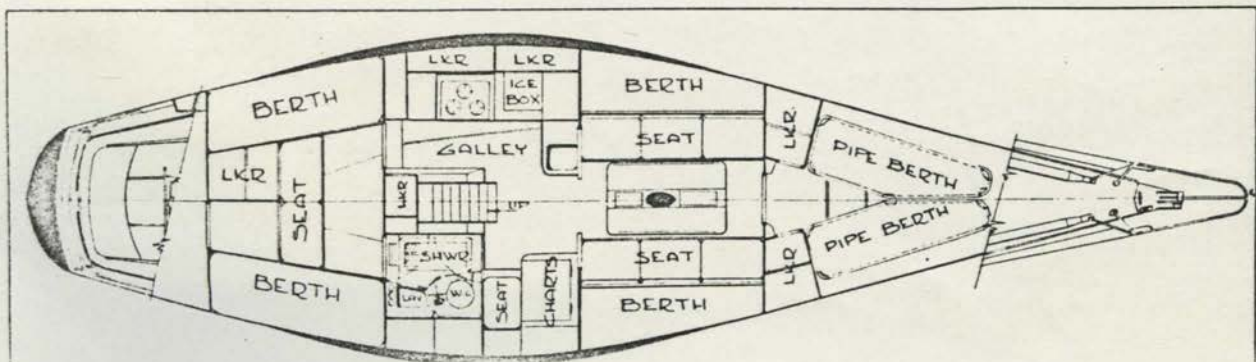
Lead external keel with stainless steel docking plate  
Emergency tiller  
Draft Marks  
5" Danforth Constellation Compass with 45° lubber lines  
and rheostat  
Double lifelines—bow & stern pulpits to I.O.R. requirements  
Ensign staff  
Teak & holly cabin sole  
Three (3) burner gas stove with oven  
Two (2) diaphragm type bilge pumps  
4-108 Perkins diesel  
Folding geared propeller  
Three (3) 105 ampere hour batteries and 50 amp alternator  
Four (4) wire lightning protection  
Roller reefing  
Reaching strut  
Two (2) spinnaker poles  
Ten (10) Lewmar winches (including four 3 speeds)  
Six (6) snatch blocks  
Four (4) air fenders  
Four (4) dock lines  
One (1) Boat hook  
One (1) bosun chair  
One (1) 5-part boom vang  
Two (2) double foot blocks  
One (1) 40 lb. Danforth with chain and rode  
Two (2) spinnaker halyards & winches  
Two (2) genoa halyards & winches  
All teak interior  
Lloyds Molding Certificate  
Adjustable stainless steel maststep  
Blake Marine Toilet  
Telephone type shower in head  
All internal halyards  
Eleven (11) Dacron sheets and guys of various sizes for headsails  
Icebox with 4" of insulation

# Nautor's SWAN 41'



## DIMENSIONS

Length	41'0"	I-54.00'
D.W.L.	30'3"	P-48.00'
Beam	11'11½"	J-17.85'
Draft	6'6"	E-13.00'
Displacement—approximately 19,500 lbs.		
Ballast 9,700 lbs.		





Nautor Inc. is a new company, which has been formed by Mark C. Ewing (formerly a Vice President of Palmer Johnson, Inc.) and Mitchell C. Gibbons-Neff to handle the importing and sales, for North America, of the Finnish built Swan line of Sparkman & Stephens designed sailing auxiliaries.

## NAUTOR, INC.

P.O. BOX 357

THE STRAND

OXFORD, MARYLAND 21654

301-226-5188 (Telephone)

87414 NAUTOR OX MD (telex)

