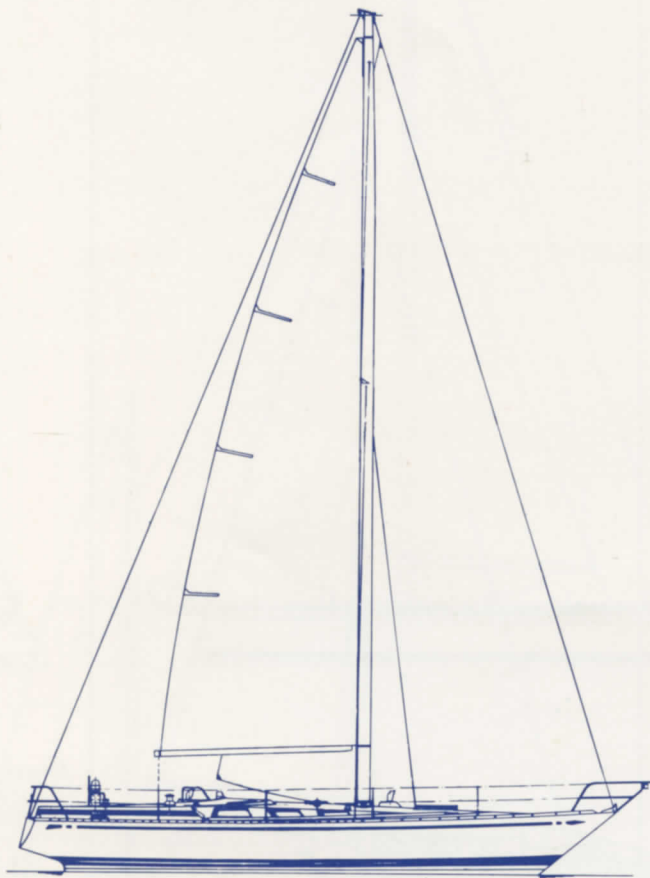


THE NAUTOR LINE 1979

SWAN 38

Design: Sparkman & Stephens

Length overall: 38,25' (11,66 m)
Waterline: 28,71' (8,75 m)
Beam: 11,58' (3,53 m)
Draft: 6,5' (2,0 m)
Ballast: 7,050 lbs (3.200 kg)
Displacement: 18,250 lbs (8.300 kg)
Engine: BUKH DV 20 M diesel

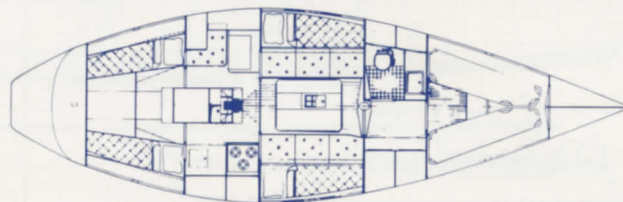
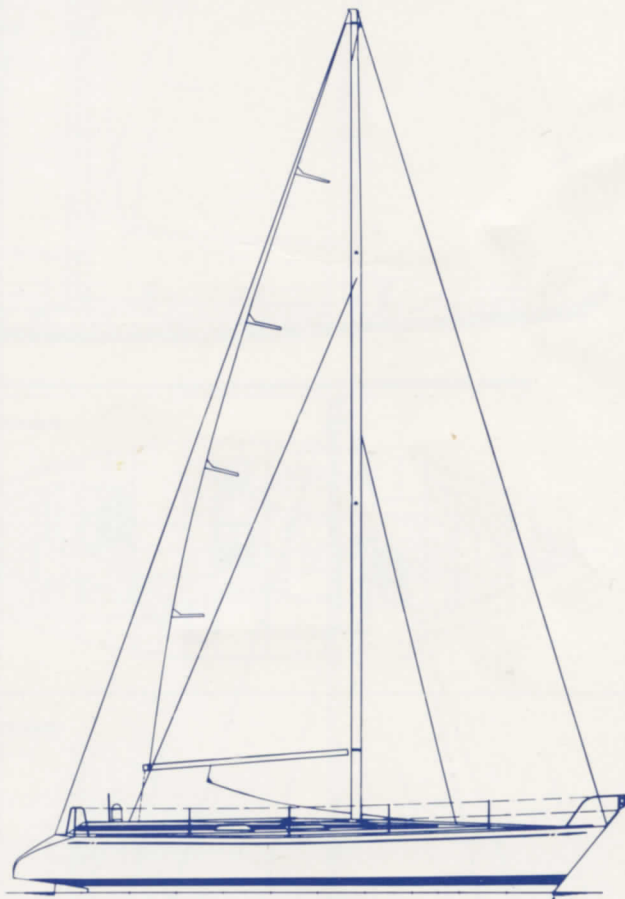


SWAN 39

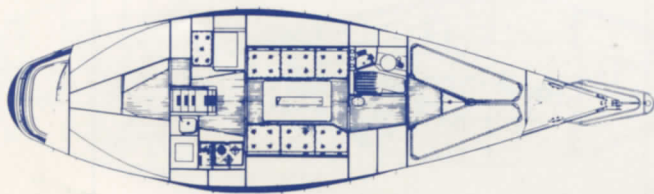
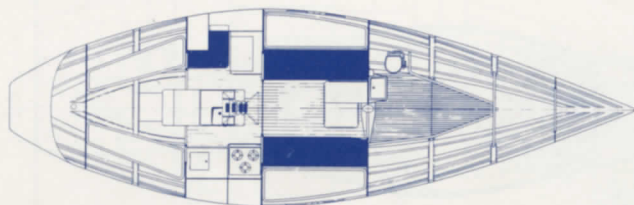
Design: Ron Holland

Length overall: 39,3' (11,99 m)
Waterline: 31,5' (9,6 m)
Beam: 12,5' (3,8 m)
Draft: 7,3' (2,2 m)
Ballast: 7,900 lbs (3.600 kg)
Displacement: *18,000 lbs (8.200 kg)
Engine: Perkins 4.108 M diesel

*Racing version: 16,700 lbs (7.600 kg)



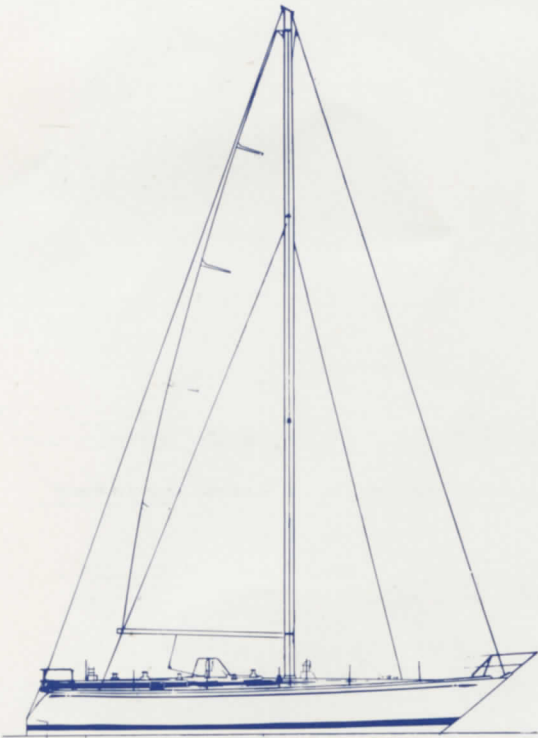
Also available as racing version



SWAN 411

Design: Sparkman & Stephens

Length overall: 40,81' (12,44 m)
Waterline: 33,56' (10,23 m)
Beam: 11,93' (3,64 m)
Draft: 7,5' (2,3 m)
Ballast: 11,450 lbs (5.200 kg)
Displacement: 23,800 lbs (10.800 kg)
Engine: Perkins 4.108 M diesel

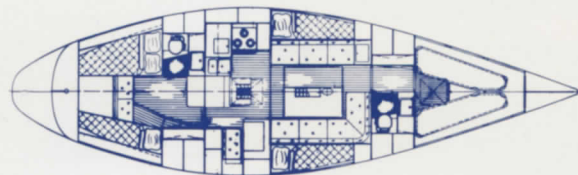


SWAN 441

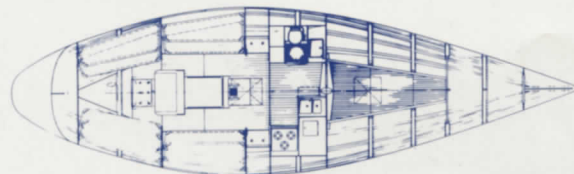
Design: Ron Holland

Length overall: 44,42' (13,54 m)
Waterline: 36,75' (11,20 m)
Beam: 13,35' (4,07 m)
Draft: 8,0' (2,4 m)
Ballast: *11,000 lbs (5.000 kg)
Displacement: 24,000 lbs (10.900 kg)
Engine: Perkins 4.108 M diesel

*Racing version: 13,200 lbs (6.000 kg)



Also available as racing version



SWAN

Design: Sparkman & Stephens

Length overall: 47,8
Waterline: 36,24' (11,00 m)
Beam: 13,76' (4,19 m)
Draft: 7,8' (2,4 m)
Ballast: 15,500 lbs (7.000 kg)
Displacement: 32,400 lbs (14.700 kg)
Engine: Volvo Penta

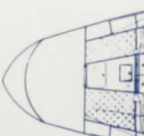
Also available as racing version



Interior version I



Interior version II

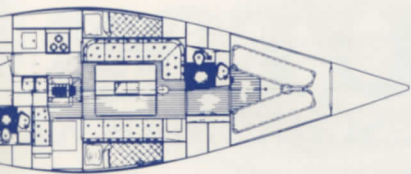
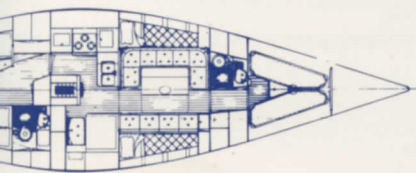
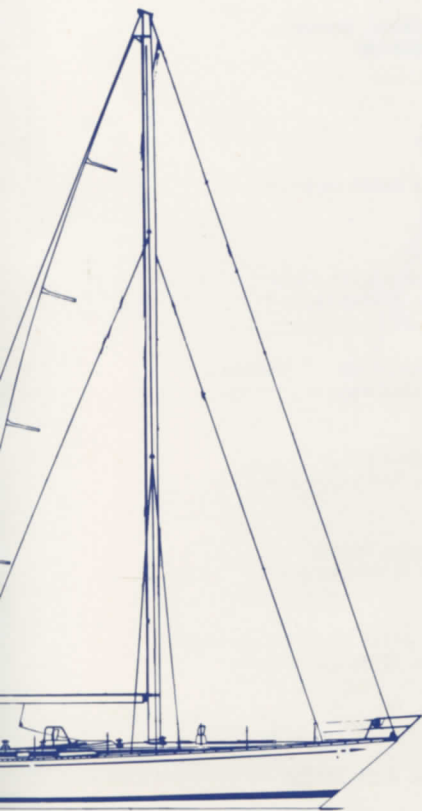


47

Stephens

Length overall: 14,57 m
Waterline: 10,05 m
Beam: 4,00 m
Draft: 1,00 m
Ballast: 14.700 kg
Displacement: 14.700 kg
Engine: MD 21 A diesel

Deck version

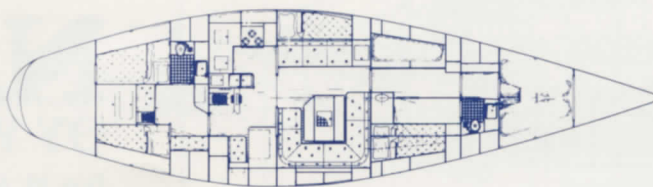
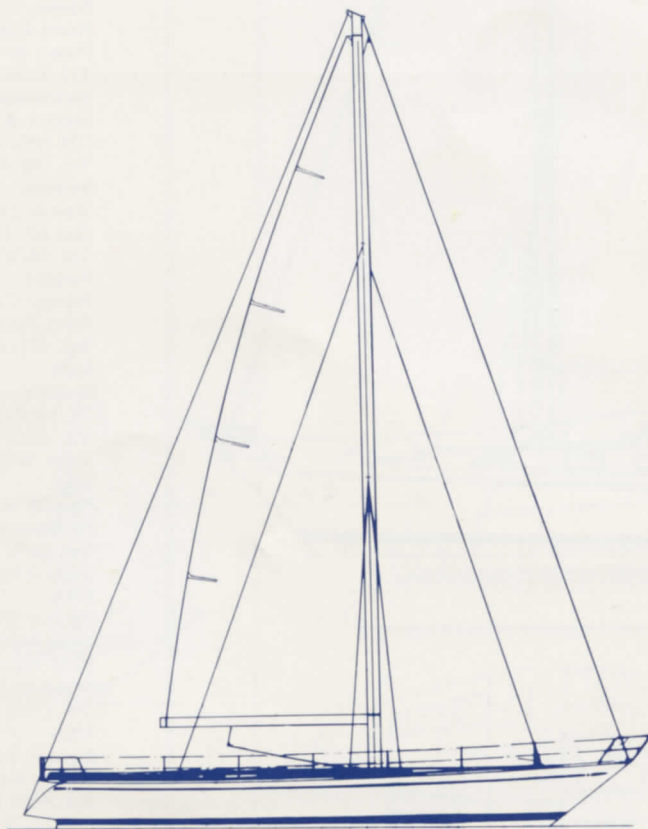


SWAN 57

Design: Sparkman & Stephens

Length overall: 57,4' (17,5 m)
Waterline: 45,8' (14,0 m)
Beam: 15,8' (4,8 m)
Draft: 9,1' (2,8 m)
Ballast: 18,900 lbs (8.600 kg)
Displacement: 49,500 lbs (22.500 kg)
Engine: Perkins 4.236 M diesel

Also available as ketch

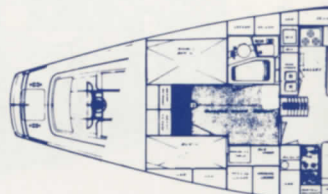


SWAN 65

Design: Sparkman & Stephens

Length overall: 64,57' (19,68 m)
Waterline: 47,0' (14,33 m)
Beam: 16,33' (4,98 m)
Draft: 9,6' (2,9 m)
Ballast: 30,600 lbs (13,900 kg)
Displacement: 70,000 lbs (31.800 kg)
Engine: Perkins H 6.354 M diesel

Also available as sloop



SWAN 76

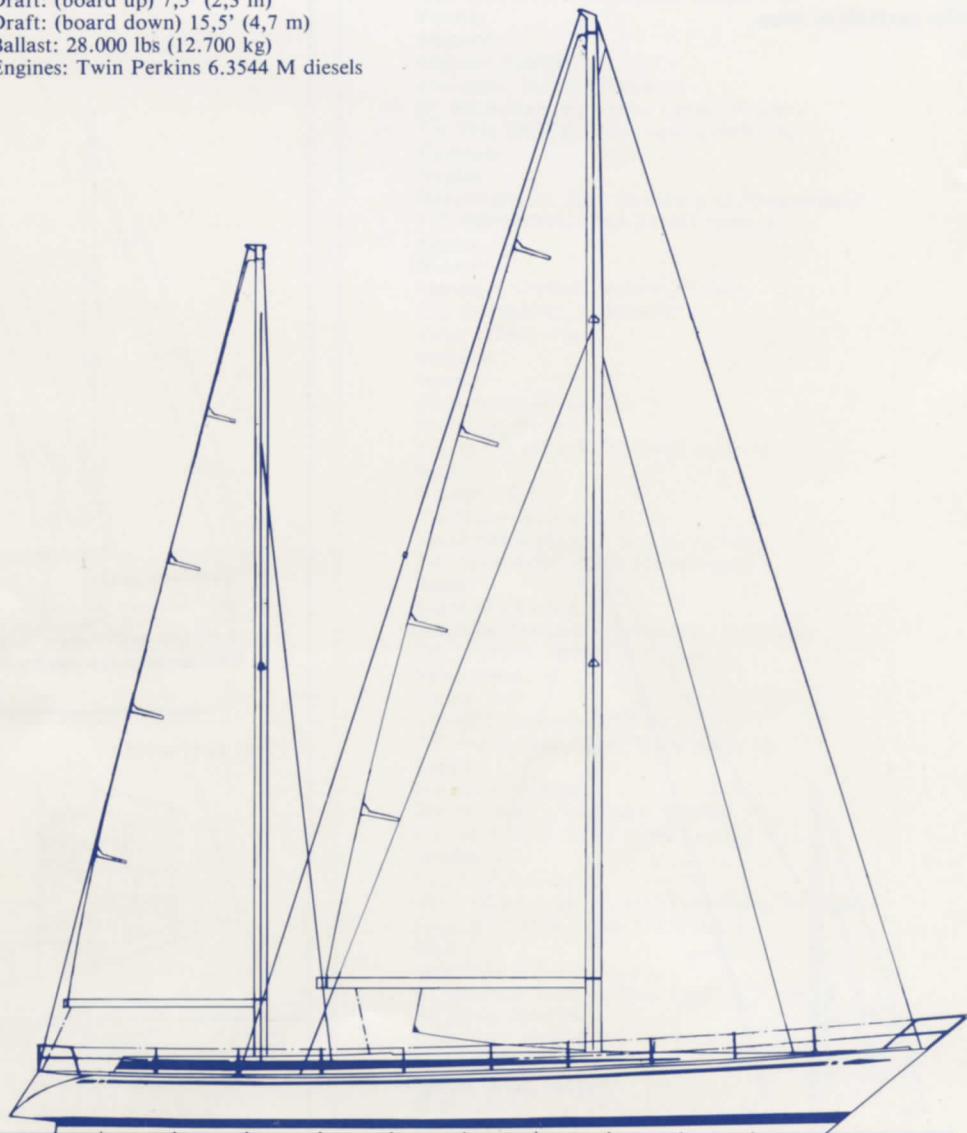
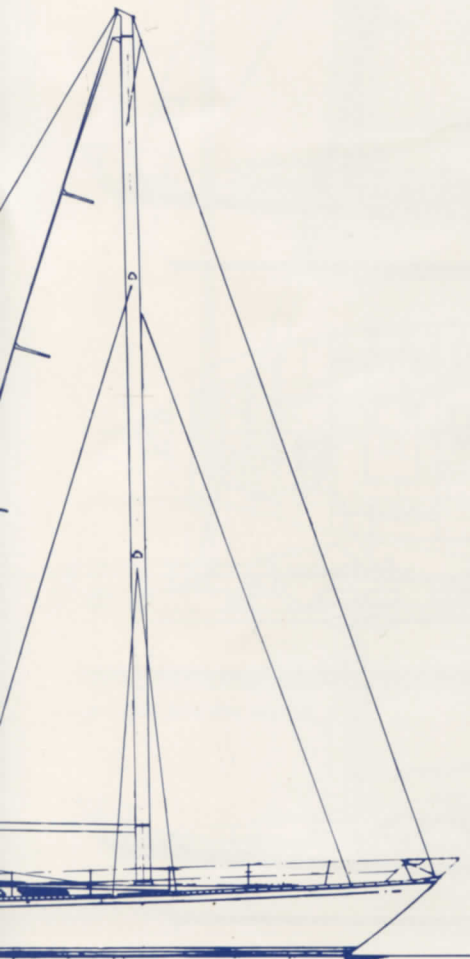
Design: Sparkman & Stephens

Trunk deck version:

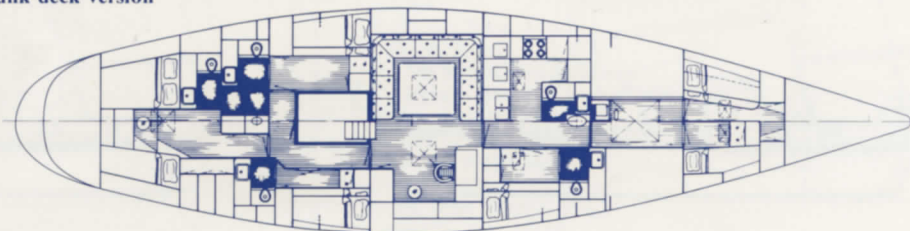
Length overall: 76,3' (23,3 m)
Waterline: 61,3' (18,7 m)
Beam: 19,0' (5,8 m)
Draft: 12,0' (3,6 m)
Ballast: 24.000 lbs (10.900 kg)
Displacement: 100.000 lbs (45.400 kg)
Engine: Mercedes Benz OM 402 diesel

Deckhouse version:

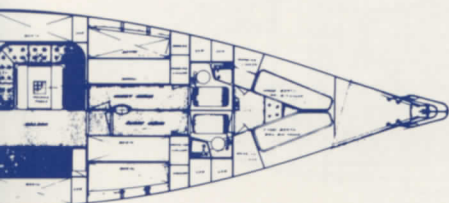
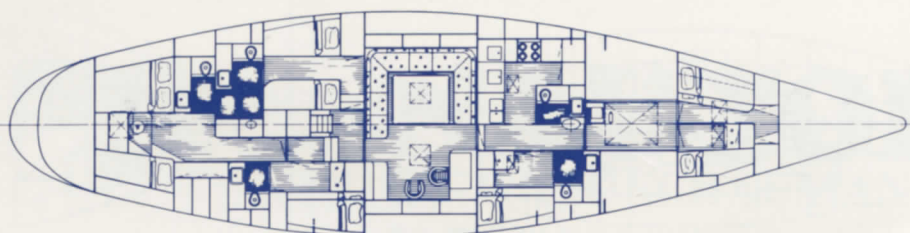
Draft: (board up) 7,5' (2,3 m)
Draft: (board down) 15,5' (4,7 m)
Ballast: 28.000 lbs (12.700 kg)
Engines: Twin Perkins 6.3544 M diesels



Trunk deck version



Deckhouse version

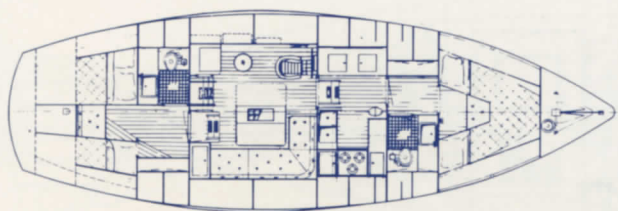
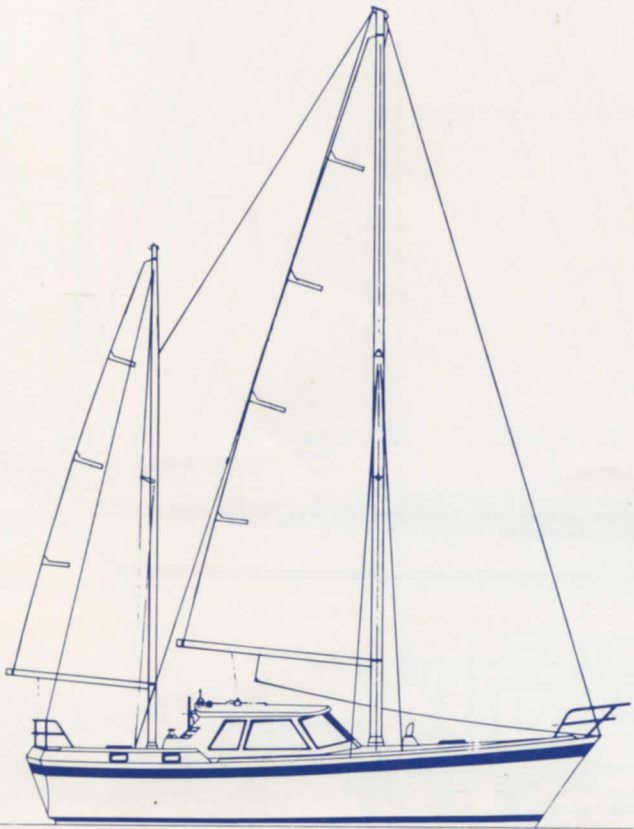


NAUTOR 39

Design: Sparkman & Stephens

Length overall: 39,21' (11,95 m)
Waterline: 31,0' (9,45 m)
Beam: 13,16' (4,01 m)
Draft: 5,6' (1,7 m)
Ballast: 9,500 lbs (4.300 kg)
Displacement: 29,400 lbs (13.300 kg)
Engine: Perkins 4.236 M diesel

Also available as sloop



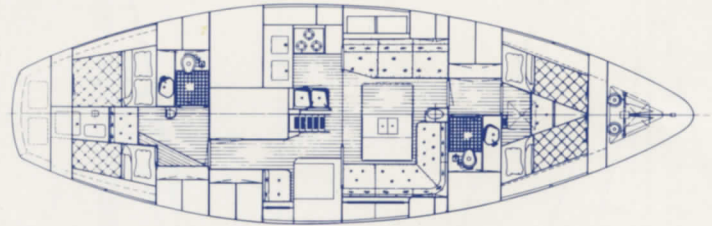
NAUTOR 43 • 43 D

Design: Sparkman & Stephens

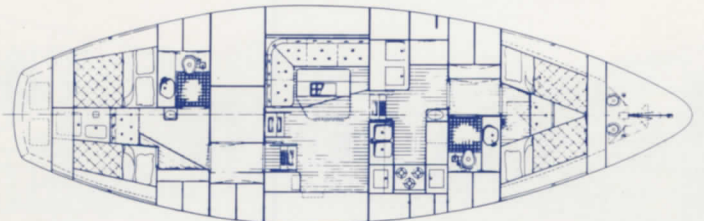
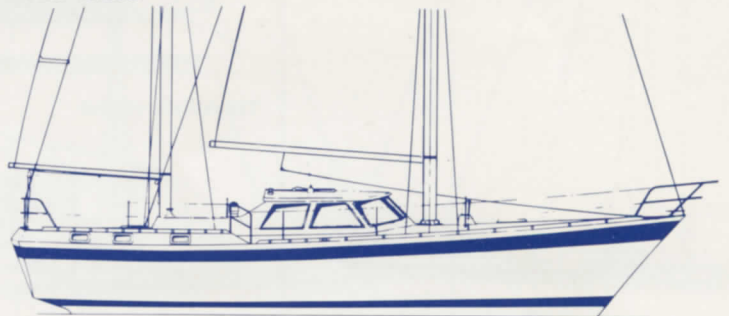
Length overall: 42,73' (13,02 m)
Waterline: 31,50' (9,60 m)
Beam: 13,83' (4,22 m)
Draft: 5,8' (1,8 m)
Ballast: 9,000 lbs (4.100 kg)
Displacement: 32,500 lbs (14.800 kg)
Engine: Perkins 4.236 M diesel



Flush deck version



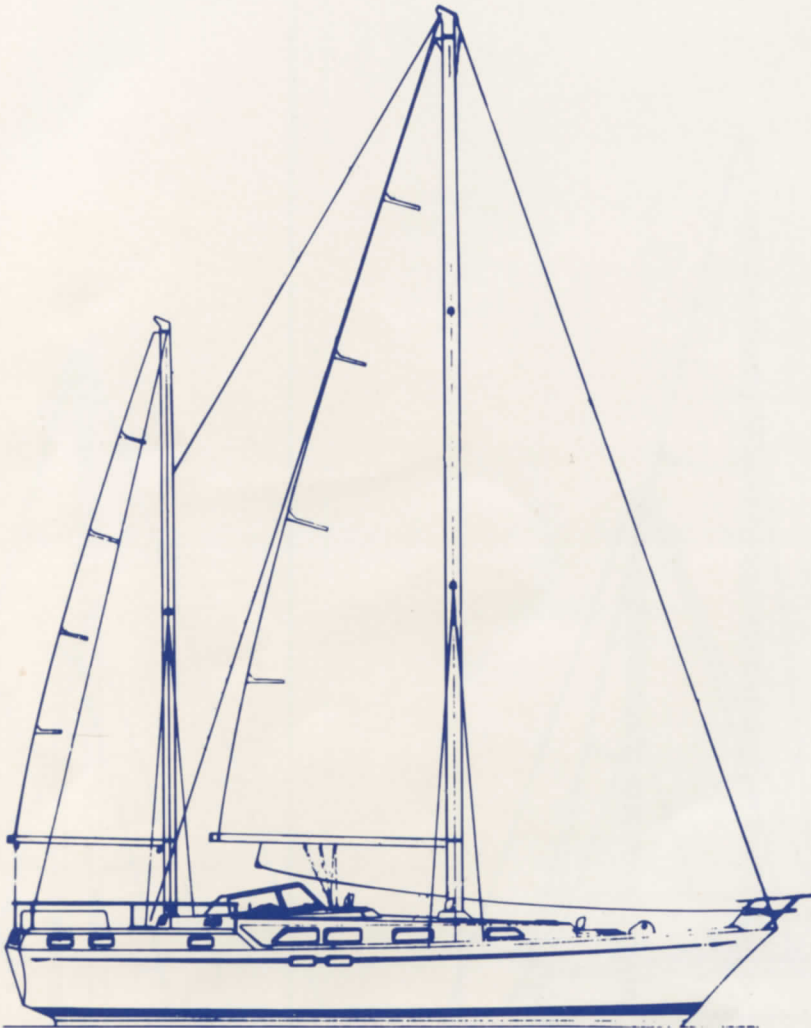
Deckhouse version



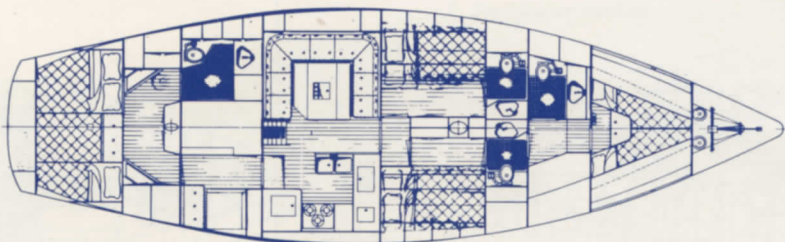
NAUTOR 50

Design: Sparkman & Stephens

Length overall: 49,87' (15,20 m)
Waterline: 37,50' (11,43 m)
Beam: 15,08' (4,60 m)
Draft: 5,7' (1,7 m)
Ballast: 14,500 lbs (6.600 kg)
Displacement: 51,900 lbs (23.500 kg)
Engine: Perkins H 6.354 M diesel



Guest cabin fo'c's'le version



Sales Offices

The British Isles

Nautor
Capstan House, High Street
Hamble, Hants SO3 5HA, England
Tel. Hamble (042122) 3343, Telex 477316 nautok g

Denmark

Nautor
Taarbæk Strandvej 105-0
DK-2930 Klampenborg, Danmark
Tel. 01-630977, Telex 16600 fotex dk yacht design

France

Paris

Sylvinter S.A.
84, Avenue d'Iéna, 75116 Paris, France
Tél. 723.78.17, Telex sylvint 610538 f

France

Monaco

Michael Hurrell
c/o Opus, Palace l'Ermanno
27, Bd Albert Ier, Monte Carlo, Monaco
Tel. (93) 300 700, Telex opus 479490 mc

Germany

Nautor

Badestrasse 24, 2000 Hamburg 13, Deutschland
Tel. 040-448636, Telex 211483 ruder d

Greece

Nautor

Marina 4, Glyfada, Athens, Greece
Tel. 21-8948503, 21-8948700
Telex 219803 ct gr

Holland

Nautor

Jachthaven Aquadelta
Bruinisse, Holland
Tel. 01113-1810, Telex 55405 yacht nl

Italy

Nautor S.R.L.

Via Milite Ignoto 12 A
16038 Santa Margherita Ligure, Italia
Tel. 0185-80507, Telex 271546 nauto i

Spain

Santa Eulalia S.A.

Paseo de Gracia 60, Barcelona - 7, España
Tel. 2154216, Telex 51310 boga e

Switzerland

Nautor AG

CH-6072 Sachseln, Schweiz
Tel. 041-662040, Telex 72409 nauto ch

Sweden

Nautor Stockholm

Box 60, 162 11 Vällingby, Sverige
Tel. 08/879355, Telex 11310 exotic s

Sweden

Nautor Göteborg

Östra Hamngatan 31, 41110 Göteborg, Sverige
Tel. 031/178330, Telex 27271 ifab s

USA

Sparkman & Stephens, Inc.

79, Madison Avenue, New York, N.Y. 10016
Tel. (212) 689-9292

Telex WUI 620984 and RCA 236201

USA

Nautor West, Inc.

70 Broadway, San Francisco, CA. 94111
Tel. (415) 421-1631

Telex 278304 nauto ur

USA

Nautor West, Inc.

Suite 281
2700 West Coast Highway
Newport Beach, CA. 92663

Tel. (714) 631-4836

USA

Nautor Northwest

McKee and Mooney Inc.
301 West Kinnear Place

Seattle, Wa. 98119

Tel. (206) 285-1746

Telex 321023 mckmoon sea

NAUTOR

OY WILH. SCHAUMAN AB

Box 10, 68601 Pietarsaari, Finland

Tel. 358 67 18204, Telex 75-47 nauto sf