

Swan 76

Designed by Sparkman & Stephens

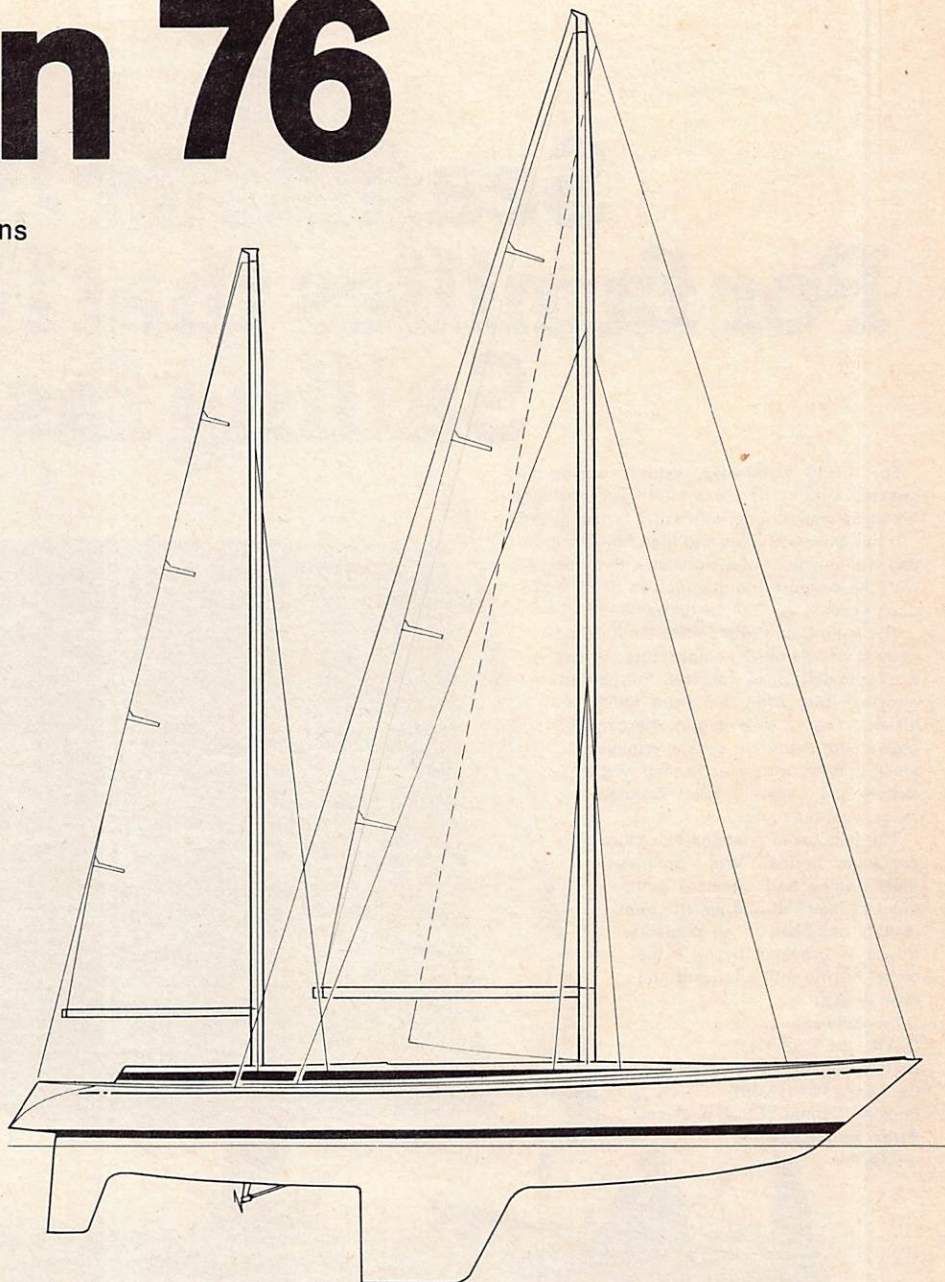
After a series of design studies for a new yacht to head the Nautor range, the Swan 76 project has finally become a reality. Earlier Swans had achieved a notable reputation, both for cruising and racing. The first concept for a yacht to take over from the Swan 65 as the Nautor flagship was based on a 24.7m (81 ft) design about two years ago. After working through different arrangements and considering factors like performance, rating and price, the yacht finally came out as the 76, based largely on James Kilroy's maxi-rater *Kialoa*, but incorporating later design thinking. Originally designed as a ketch, the 76 has various alternative layouts, as Olin Stephens explains below.

Auxiliary power is provided by a single Mercedes Benz OM 402 driving a variable pitch propeller.

Alternatively, a twin engine installation with two Perkins 6.3544 diesels is possible for the deckhouse version. Continuous cruising speed under power is 10 knots, with a range of 600 miles.

Two 7.5 kVa generators are installed as standard, and the yacht has a 220/110 V system throughout.

The first hull has now been moulded, but the assembly work which follows will not be completed until next May. Already, however, four orders have been taken for what will be the largest g.r.p. production yacht in the world.



The designer comments:

"The new Swan 76 is expected to become a premier example of excellence in construction and performance for sailing vessels around the world. It will be the largest and best Swan ever, drawing on the firm tradition of Swan strength, speed and comfort.

LOA	23.3m	76ft 4in
LWL	18.7m	61ft 4in
Beam	5.8m	19ft 0in
Draught:		
Fin	3.6m	12ft 0in
C/b up	2.3m	7ft 6in
C/b down	4.7m	15ft 5in
Displacement:		
Flush deck	45.4tonnes	44.7tons
Deckhouse	48.6tonnes	47.8tons

Designed by: Sparkman & Stephens Inc, 79 Madison Avenue, New York 10016, USA.

Built by: Nautor Oy Wilh Schauman AB, Box 10, 68601 Pietarsaari, Finland.

The hull form reflects the years of Sparkman & Stephens experience with large sailing yachts, particularly *Kialoa*. As such, the Swan 76 will be well adapted to either world-wide cruising or racing. The proportions and body plan, while designed to give maximum speed and seakindness, are also well suited to the IOR. The Swan 76 represents an evolutionary step forward in design principles from the already highly successful Swan 65 that has, until this time, been the gold standard of Nautor and Sparkman & Stephens excellence.

G.r.p. constructed with extensive use of longitudinal stringers and interior structures, the Swan 76 will be a strong yacht. Every boat will be delivered with a Lloyd's Register Hull Construction Certificate.

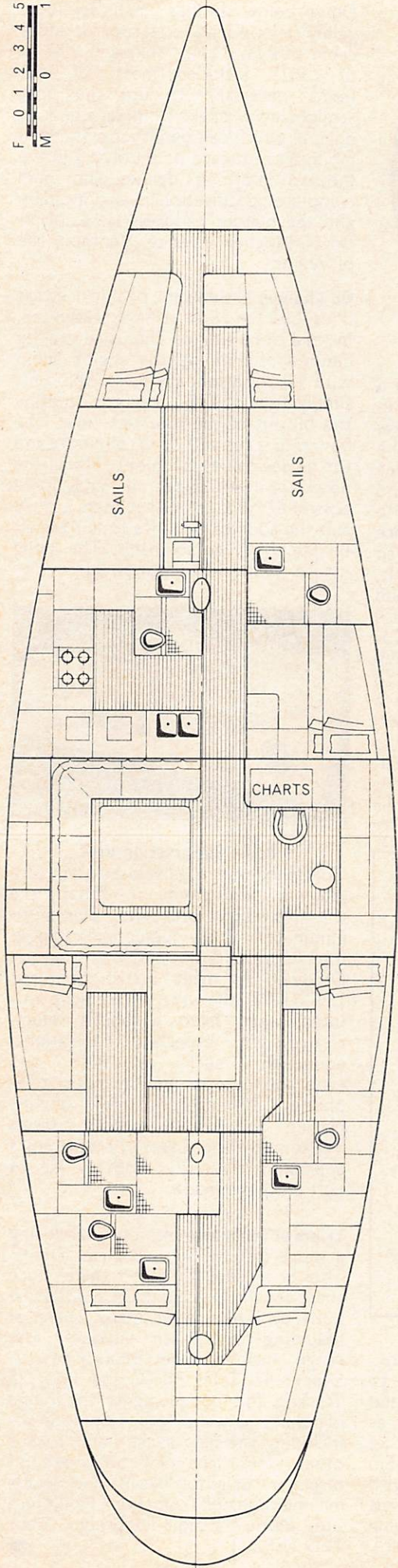
The plans allow for several alternative arrangements both above and below decks. The principle option will be between choosing the Deckhouse Model (which allows for an

additional stateroom) or the Swan Deck Model which exhibits the traditional flush deck profile for which Swans are renowned. Either model can be ordered with a fixed keel or with a keel centreboard configuration and be rigged either as a ketch or as a sloop.

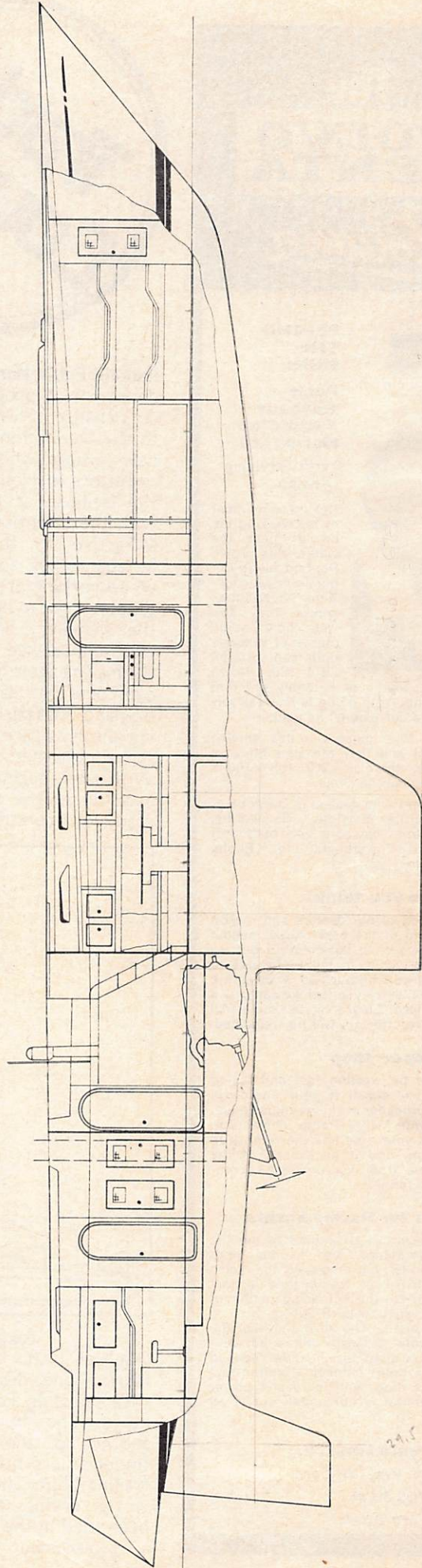
Accommodation on the Swan 76 will include a large owner's stateroom aft with double and single bunks and its own large private bath, three or four additional double staterooms each with a private bath, crew's quarters for three, a spacious galley and generous stowage areas throughout the yacht. The steering position on all models will be amidships.

In summary, the Swan 76 is expected to be the perfect yacht for the owner who demands the highest standards of excellence in all areas whether his intention is to win the next Round-the-World Race or enjoy exploring the Greek Islands with his family and friends." ■

F 0 1 2 3 4 5
M 0 1



Flush deck version



CLM = 31.574
5.000

29.5 10