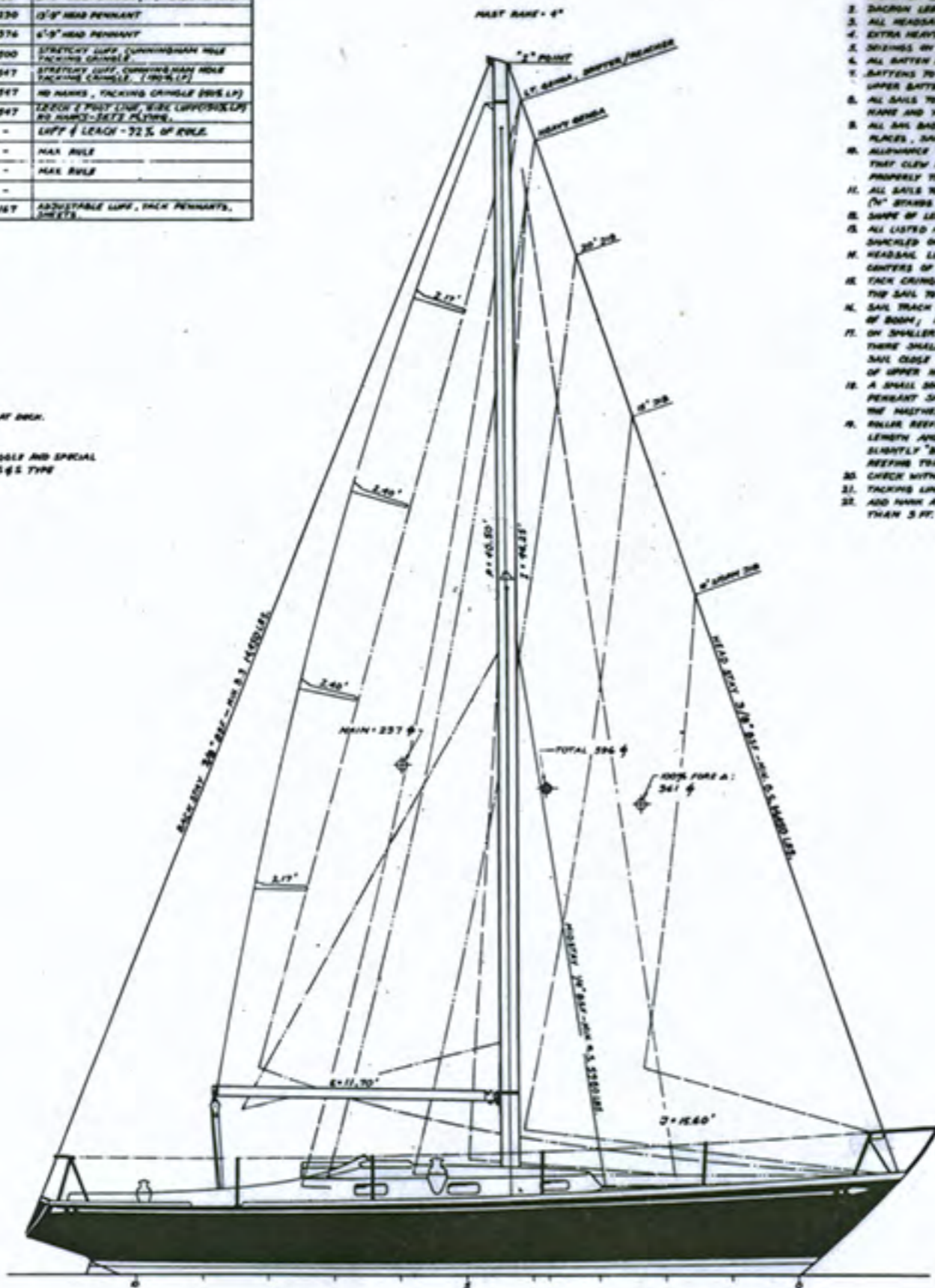


SAILS

| NAME               | WIND<br>R.P.H. | WEIGHT | FOOT   | LUFF   | AREA<br>SQ. FT. | REMARKS                                                        |
|--------------------|----------------|--------|--------|--------|-----------------|----------------------------------------------------------------|
| MAIN SAIL          | —              | 5.8    | 36'    | 54'    | PLAN            | ROLLER REEFING, CURVED/DIPPER<br>TRICK SYSTEM                  |
| STORM TRYSAIL      | —              | 7.0    | 17'-0" | 16'-0" | 86              | SHEETS, ROPE TACK PENNANT                                      |
| 16' STORM 3/8      | 45-60          | 7.0    | 10'-3" | 23'-4" | 89              | 3/4" HEAD PENNANT, 1/8" TRICK PENNANT                          |
| 16' 3/8            | 32-45          | 7.0    | 15'-4" | 23'-0" | 230             | 1/8" HEAD PENNANT                                              |
| 20' 3/8            | 20-32          | 7.0    | 20'-0" | 40'-0" | 376             | 1/8" HEAD PENNANT                                              |
| 25' HEAVY GENOA    | 13-20          | 5.5    | 23'-4" | 45'-0" | 200             | STRETCHY LUFF, CURVED/DIPPER HOLE<br>TACKING CRUMPLE           |
| 24' MEDIUM GENOA   | 7-13           | 4.7    | 24'-7" | 45'-0" | 247             | STRETCHY LUFF, CURVED/DIPPER HOLE<br>TACKING CRUMPLE (190% LP) |
| 24' LIGHT GENOA    | 3-7            | 3.0    | 24'-7" | 45'-0" | 247             | NO MARKS, TACKING CRUMPLE (200% LP)                            |
| 27' BRITCH/REACHER | 0-3            | 2.5    | 34'-9" | 44'-0" | 247             | TACKLE 2 FOOT LINE, WIRE LUFF/LEACH<br>BY HAND-SETTY SYSTEM    |
| SPANNER/STANSPANN  | —              | 1.5 N  | —      | —      | —               | LUFF & LEACH - 72% OF RULE                                     |
| REGULAR SPINNAKER  | —              | 1.5 N  | —      | —      | —               | MAX RULE                                                       |
| LIGHT SPINNAKER    | —              | 0.75 N | —      | —      | —               | MAX RULE                                                       |
| FLOATER SPINNAKER  | —              | 0.5 N  | —      | —      | —               | —                                                              |
| TALL CUT STAY SAIL | —              | 2.2    | 8'-4"  | 40'-4" | 167             | ADJUSTABLE LUFF, TRICK PENNANTS,<br>SHEETS                     |

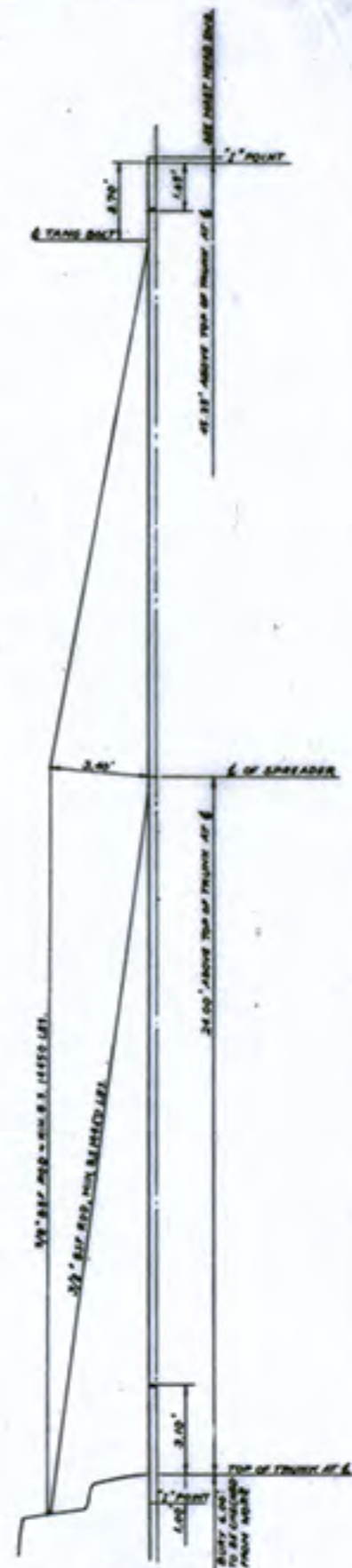
TURNBUCKLE LIST

TOP SHROUD: NONE - TOGGLE AT DECK  
 LNW SHROUD: NONE - TOGGLE AT DECK  
 MID STAY: TOGGLE AT TOP, SPECIAL P/B AT DECK  
 HEAD STAY: NONE - TOGGLE EACH END  
 BARE STAY: ONE (1) LEWMAR #10 BY 1/4" TOGGLE AND SPECIAL  
 ADJUSTING HANDLES SEE 345 TYPE  
 PLAN NO 23



GENERAL NOTES

1. WEIGHT OF MATERIAL IS GIVEN IN OUNCES PER SQ. YD. US STD. WIDTH OF 36 3/4".
2. SACRON LEACH LINE ON ALL SACRON SAILS.
3. ALL HEADSAIL HARKS TO BE SIDE PULL TYPE.
4. EXTRA HEAVY DEVICES ON ALL SLIDES AND HARKS.
5. DEVICES ON ALL LUFF SLIDES TO BE NEW COVERED.
6. ALL BATTEN POCKETS TO BE GREAT TUBE, WITH LIGHT TIES.
7. BATTENS TO BE NEW, TAPERED AND VARNISHED, EXCEPT FOR UPPER BATTEN, WHICH SHALL BE FIBERGLASS, MAX. FLX. 9 TAPERED.
8. ALL SAILS TO BE MARKED AT HEAD WITH SAIL NAME, BOAT NAME AND YEAR.
9. ALL SAIL BAGS TO BE SYNTHETIC AND TO BE MARKED IN THREE PLACES, SAME AS SAILS.
10. ALLOWANCE TO BE MADE IN LEACH DIMENSIONS OF GENOAS SO THAT CLEW PENNANT WILL BE AS INDICATED WHEN SAIL IS PROPERLY TENDED.
11. ALL SAILS TO BE SACRON, UNLESS OTHERWISE NOTED (N" STAYS FOR HEADSAIL).
12. SHAPE OF LEACH TO BE THE RESPONSIBILITY OF THE SAIL MAKER.
13. ALL LISTED HEADSAIL TRICK PENNANTS TO BE FURNISHED AND CHECKED ON BY SAIL MAKER.
14. HEADSAIL LUFF LENGTH IS LENGTH OF LUFF WIRE BETWEEN CENTERS OF THIMBLES.
15. TRICK CRUMPLES OF LARGE HEADSAILS TO BE MADE WITHIN THE SAIL TO BRING THE FOOT AS LOW AS POSSIBLE.
16. SAIL TRACK TO BE CARRIED DOWN TO LOWEST POSITION OF BOOM; NO SPECIAL TRACK STOP TO BE INSTALLED.
17. ON SMALLER HEADSAILS, WHERE TRICK PENNANTS ARE SPECIFIED, THERE SHALL BE A STRONG HOOK AT TACK OF SAIL, TO HOLD SAIL CLOSE TO STAY, AND PREVENT PROGRESSIVE FAILURE OF UPPER HOOKS.
18. A SMALL SOCKET FOR HOLDING A BALANCED RACING WIND PENNANT SHALL BE INSTALLED NEAR THE AFTER END OF THE HEADSAIL "BEAK".
19. ROLLER REEFING GOSSENHORN SLIDE SHALL BE DOUBLE NORMAL LENGTH AND SHALL BE HIGHLY POLISHED INSIDE WITH ENDS SLIGHTLY "BELLER" TO FACILITATE OPERATION UNDER REEFING TORQUE.
20. CHECK WITH BUILDER FOR EXACT ROLLER REEFING TACK OFFSET.
21. TACKING LINE EYE IN FOOT OF ALL GENOAS.
22. ADD MARK AT UPPER THIMBLE OF HEAD PENNANTS MORE THAN 3 FT. LONG.



LOA 36'-2 1/2"  
 OWL 27'-4"  
 BEAM MAX 10'-10"  
 DRAUGHT 4'-1 1/2"

DESIGN NO 2035  
 SAIL PLAN  
 SWAN 37'

ONE TON CUP YACHT  
 SCALE: 3/8" = 1'-0"  
 SPARKMAN & STEPHENS, INC.  
 75 MADISON AVE, NEW YORK, NY 10017  
 DEC 22, 1969  
 DWG. NO. 2035-67, ALT. 6

|    |                                                                                                                                                                                                                                                                                                                                                                                                                                         |      |
|----|-----------------------------------------------------------------------------------------------------------------------------------------------------------------------------------------------------------------------------------------------------------------------------------------------------------------------------------------------------------------------------------------------------------------------------------------|------|
| D  | HARKS AND P/B'S FOR OTHER<br>NO. 1, 2, 3, 4, 5, 6, 7, 8, 9, 10, 11, 12, 13, 14, 15, 16, 17, 18, 19, 20, 21, 22, 23, 24, 25, 26, 27, 28, 29, 30, 31, 32, 33, 34, 35, 36, 37, 38, 39, 40, 41, 42, 43, 44, 45, 46, 47, 48, 49, 50, 51, 52, 53, 54, 55, 56, 57, 58, 59, 60, 61, 62, 63, 64, 65, 66, 67, 68, 69, 70, 71, 72, 73, 74, 75, 76, 77, 78, 79, 80, 81, 82, 83, 84, 85, 86, 87, 88, 89, 90, 91, 92, 93, 94, 95, 96, 97, 98, 99, 100 | 1/2" |
| C  | REDUCED LNW SHROUD TO BY                                                                                                                                                                                                                                                                                                                                                                                                                | 1/4" |
| B  | WIND WIRE R/P, 1/4" WIRE                                                                                                                                                                                                                                                                                                                                                                                                                | 1/4" |
| A  | WIND WIRE R/P, 1/4" WIRE                                                                                                                                                                                                                                                                                                                                                                                                                | 1/4" |
| BY | ALTERNATE                                                                                                                                                                                                                                                                                                                                                                                                                               | DATE |