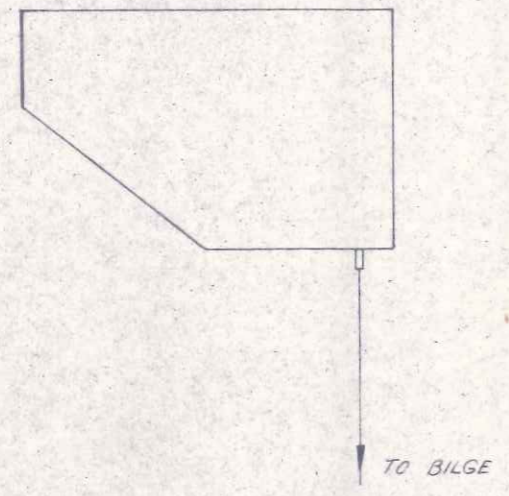


Toleranssitilheet
mitat
jälke toleranssilla
mitt

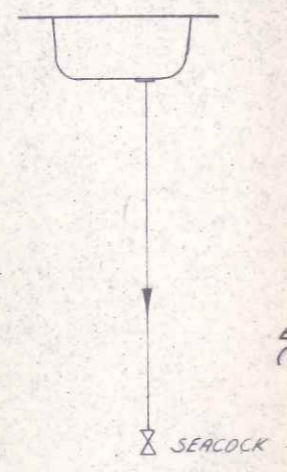
Luokitus no
Klassif. nr

Muutokset - Andringar				Työkalu - Verktyg			
Tunnus Symbol	Lukum. Arital	Oli ennen Var tidigare	Pvm. Dat.	Teki Andr.	Nimi Namn	No Nr	

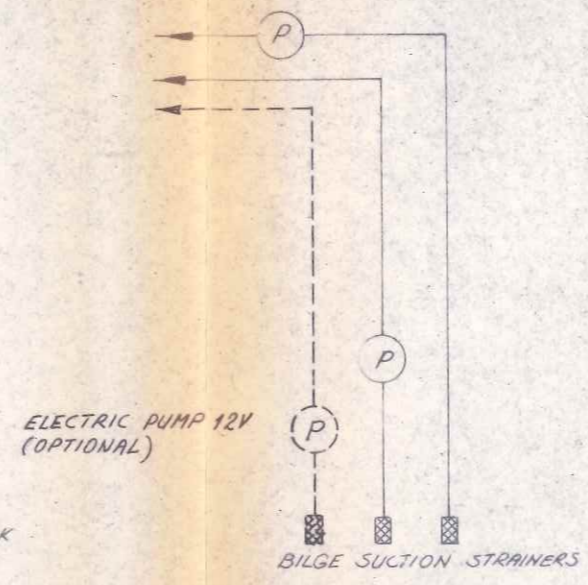
ICEBOX DRAIN



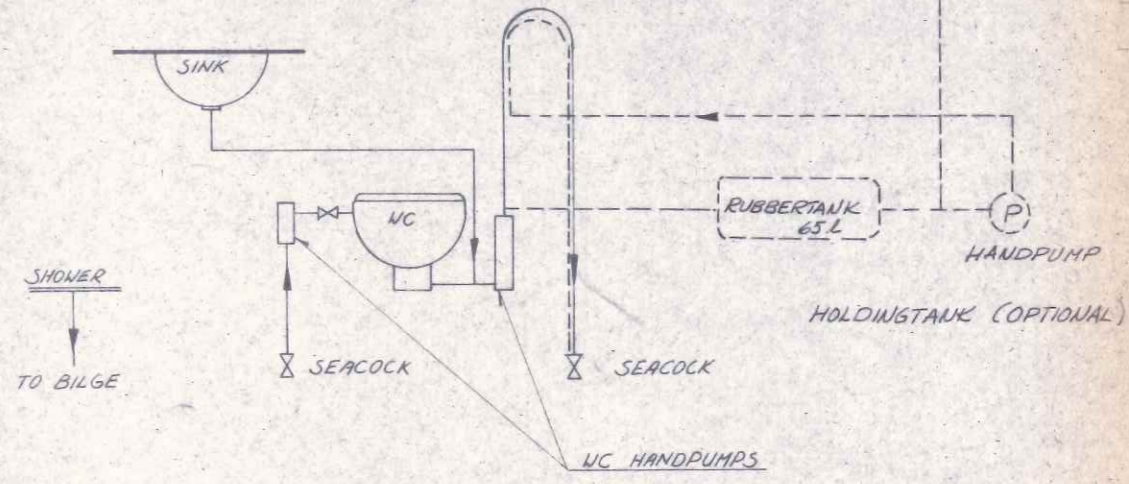
PENTRY-SINK DRAIN



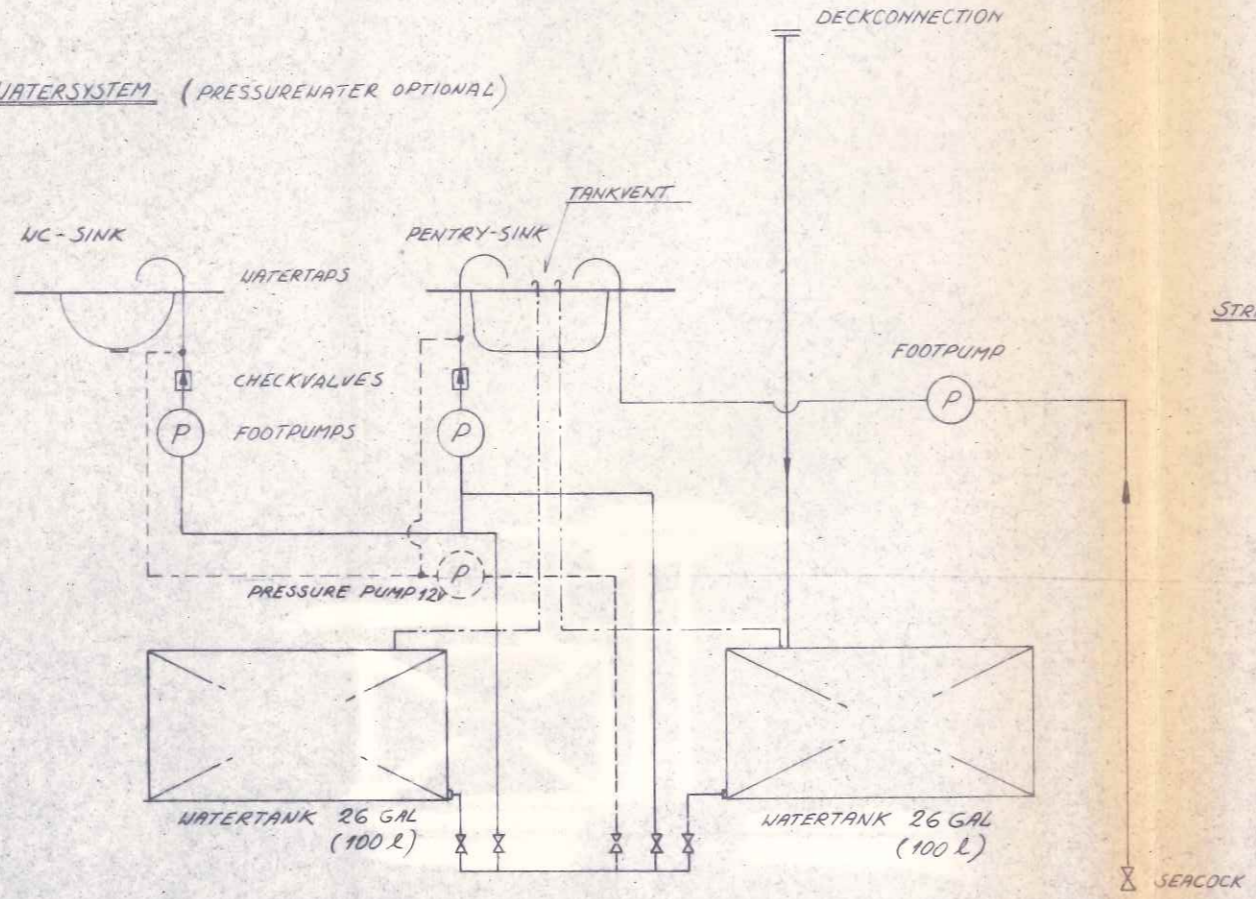
BILGEPUMPS (HANDPUMPS)



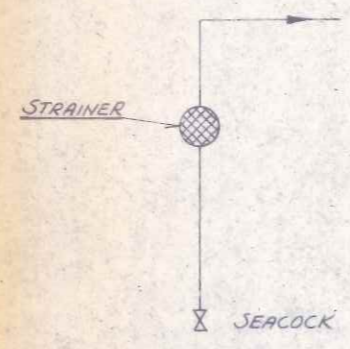
UC DRAIN



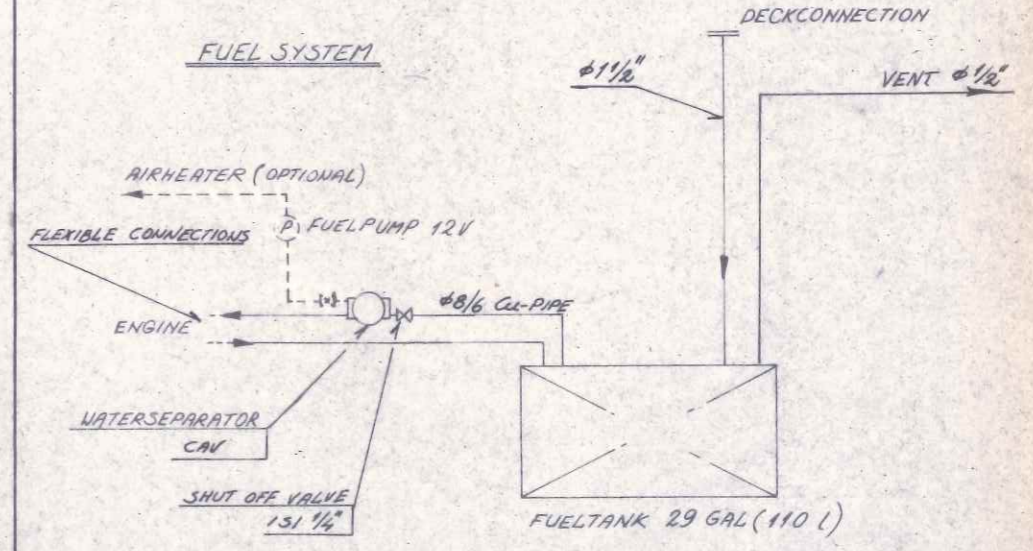
WATERSYSTEM (PRESSUREWATER OPTIONAL)



ENGINE INTAKE

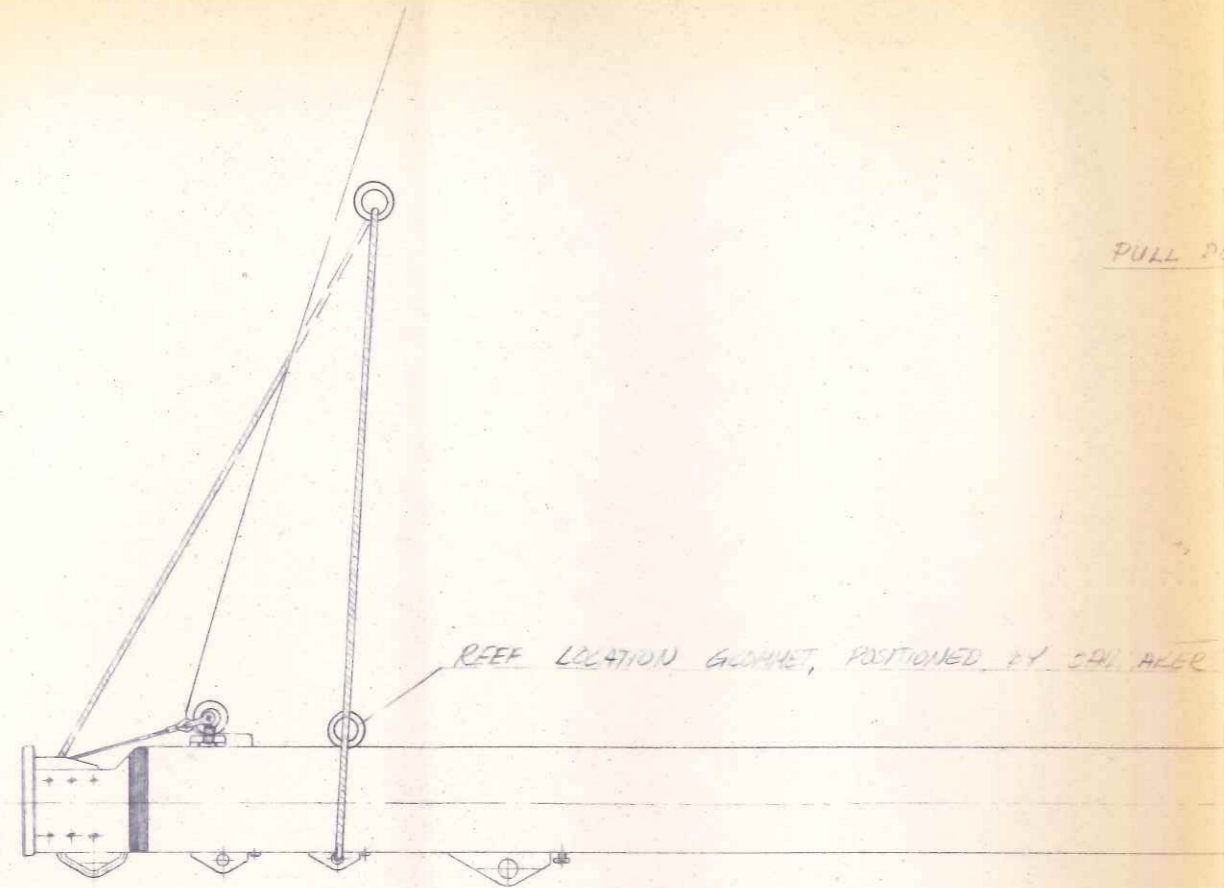


FUEL SYSTEM



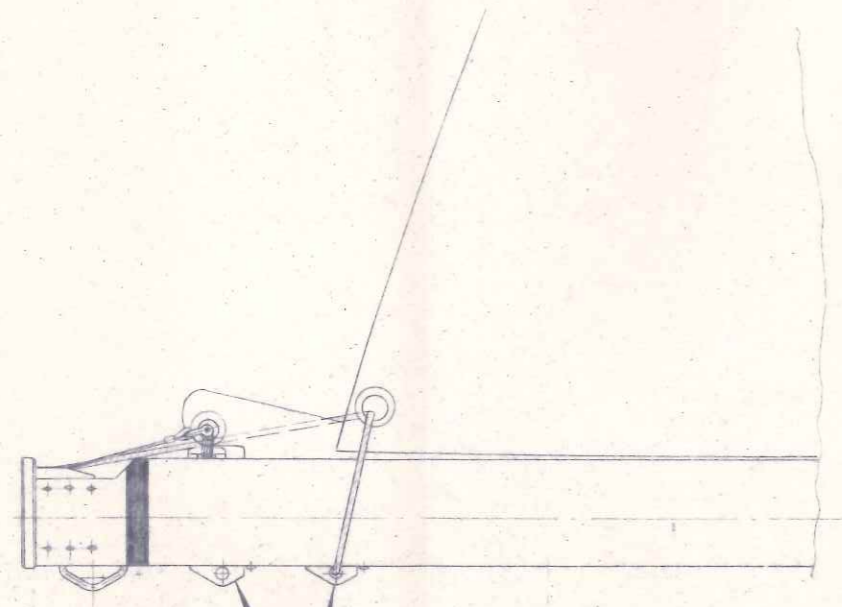
Osa Del	Nimi Namn	Piir. no Ritn. nr	Laatu Kvalitet	Muoto Form	Mitat Mått	Modell nr	Kpl St
Viite Pos.	Lajimerkki		Aines		Material		
Summ. Konstr.	Litty Tillhör.				Suhda Skala	Paino kg/kpl Vikt kg/st	
Piir. Rit.	22/4-74	BS			Työ no Arb. nr		
Tark. Gransk.					Koodi Kod		
Hyv. Godk.	Plumbing				Korvaa Ersätter		
	Svan 38				No Nr	3-51-081-A	
	NAUTOR				Korvattu Ersätt av		
	OY Wih. Schauman AB						
Muutos Andr.	X V U T S R Q P N M L K J H G F E D C B A						

Symbol Tunnus	Var tidigare Oli ennen	Dat. Pvm.	Andr. Teki	Symbol Tunnus	Var tidigare Oli ennen	Dat. Pvm.	Andr. Teki	Symbol Tunnus	Var tidigare Oli ennen	Dat. Pvm.	Andr. Teki
A		1973, 28.05.HV									



PULL DOWN AND HOOK

LOCK-OFF CAMS
FOR RECEIVING LINES



REEFED

CORRECT SLIDER POSITION
MUST BE FOUND BY TRIAL,
SHOULD BE 2 OR 3 INCHES
AFT OF CRINGLE WHEN FOOT
HAS BEEN PULLED TIGHT.

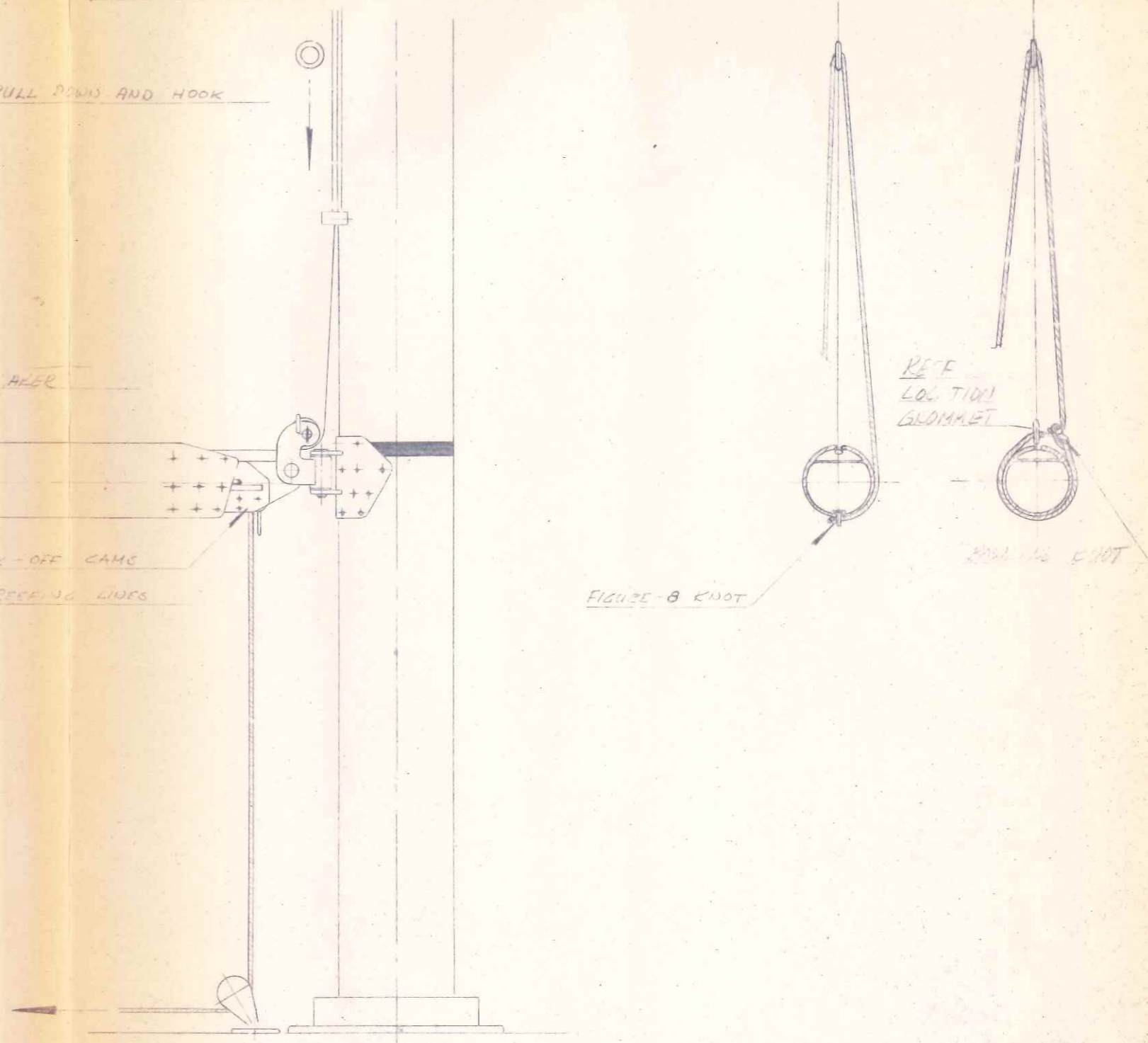


FIGURE-8 KNOT

REEF
LOC. TIDOL
GROMMET

ROLLING KNOT

Antal per båt Lukumäärä per vene	Benämning Nimitys	Ritn. nr. Piir. no	Material Aines	Mått Mitat	Pos. Viite
	Rit. Piirt. 750903	Skala Suhde	Anm. Huom.		
	Gransk. Tark. 750903				
	Godk. Hyv.				
Båttyp Venetyyppi	NAUTOR Oy Ab, Scheuman AB		SLAB REEFING PRINCIPLE SKETCH		Ersätter Korvaa 3-82-247
					Nr No 3-82-291A
					Ersatt av Korvattu
					H G F E D C B A